

# INTOUCH

Spring/Summer 2019 | A **MCALVAIN** COMPANIES PUBLICATION



## Boise State Football Turf Replacement 3.0

Boise, Idaho - Over the years, McAlvain has been fortunate to be involved in replacing the iconic blue turf multiple times for Boise State. This is the third design-build installment McAlvain has completed with previous installments completed in 2008 and 2010. It's the sixth edition of the blue. As expected, the installation went smoothly and finished on schedule. The brock performance base originally installed under the field in 2008 is in great shape and was protected during installation. The blue turf now extends all the way to the east and west stands where the old track used to be.



## The Broadway in IF Celebrates its Grand Opening

Idaho Falls, Idaho - The City of Idaho Falls celebrated the grand opening of the Broadway development and Plaza on the 28th of May. In lieu of your typical ribbon cutting ceremony, the City unveiled the plaza's fountain to celebrate the day. Construction of the office building, retail building and underground parking garage was completed late fall of 2018. McAlvain provided CM/GC services in the design and construction of this successful mixed-use development.

## PROJECT ANNOUNCEMENTS

### McAlvain Construction, Inc.

The Atrium Reno, NV  
IPC Niagara Springs Predator Control Facility  
Whitetail Cart Barn

### McAlvain Concrete, Inc.

MHAFB 2019 Repairs  
St. Luke's CUP

## RECENTLY COMPLETED

### McAlvain Construction, Inc.

The Broadway Idaho Falls  
Micron 17C Cafeteria Remodel  
E Campus Community Re-Entry Center Expansion  
IPC Langley Gulch Water Systems Improvements

### McAlvain Concrete, Inc.

NewCold Cold Storage  
Boise State Fine Arts Building  
Boise State Material Sciences Building

### McAlvain Design Build, Inc.

Boise State Albertsons Stadium Turf Replacement

## CONGRATULATIONS!

**Mark van Gulik** promoted to Director of Business Development

**David Hurley** promoted to Assistant Project Manager

**Paola Eldridge** promoted to Contract Administrator

**Reed Lenkersdorfer** promoted to Concrete Project Manager

**Rick Hamilton** promoted to Concrete Sacking Foreman

## WELCOME TO MCALVAIN!

**John Young** as Director of Construction

**Jason Ginn** as Project Manager

**Riley Smith** as Boise State CM Intern

**Austin Crann** as Project Engineer

**Austin Conger** as Sr. Concrete Superintendent



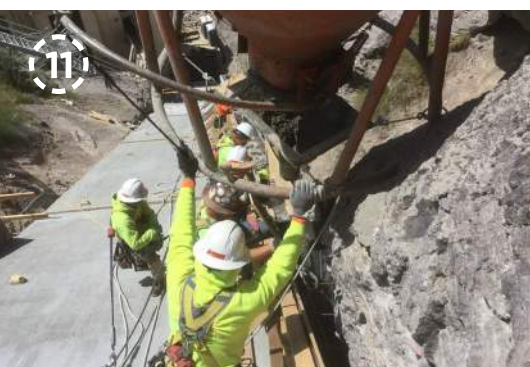
Equal Employment Opportunity Employer



## Construction Updates in Photos

Below is a partial list of current projects and progress:

- (1) Mountain Humane Ribbon Cutting - Hailey, ID
- (2) Data Center - Quincy, WA
- (3) Chinden Campus Building 8 Remodel - Boise, ID
- (4) St Luke's Downtown Parking Garage - Boise, ID
- (5) The Village Podium - Meridian, ID
- (6) Luxe Reel Theatre - Eagle, ID
- (7) Ridley's Family Market - Weiser, ID
- (8) Niagara Springs Predator Control - Boise, ID
- (9) The Atrium - Reno, NV
- (10) E. Boise Community Re-Entry Center Expansion - Boise, ID
- (11) Shoshone Falls Upgrades - Twin Falls, ID
- (12) Simplot Cold Storage - Caldwell, ID
- (13) Millenkamp Milking Parlor - Declo, ID



# Upcoming Event Calendar:

**12th JULY** Bring Your Kid To Work Day  
12 - 5 pm (For both field and office)

This year's TYKTWD is open for both the field and office employees and is tentatively set to be held in the west parking lot of the McAlvain office. Activities include:

- STEM Activity & Crafts
- Equipment Showcase
- BBQ - Hotdogs, Hamburgers & Cold Treats

Additional details to be posted on YAMMER! Stay Tuned...



**28th SEPT** Race Day 



## Recent Events:

**3rd May** Cinco de Mayo Fiesta!

The party planning committee put together another fun Cinco de Mayo Fiesta this year! Thank you to Jose Bautista for preparing and cooking the Street Tacos! #Street Tacos #Giant Jenga #Pinata #Friends



**Congratulations Team GTS! 13-U Champions!**

**SAFETY CORNER**



As the heat index rises above 103°F, there is a high risk for heat related illness, so additional measures to protect workers are needed. As we move into the warmer months, please remember to practice these three key words: **WATER, REST & SHADE.**

- **Drink small amounts of water often.** Workers should drink about 32 oz. of water every hour while the heat index is 103°F to 125°F.
- **Know the signs of Heat Illness:**
  - » Cool moist skin
  - » Heavy sweating
  - » Headache
  - » Nausea or vomiting
  - » Dizziness
  - » Light-headedness
  - » Weakness
  - » Thirst
  - » Irritability
  - » Elevated body temp
  - » Decreased urine output

▪ **Discuss prevention & risks** during your daily meetings & toolbox talks.

- » **Download the OSHA-Niosh Heat Safety Tool App**
- » **Read up on Heat Illness Prevention here:** <https://www.osha.gov/SLTC/heatstress/prevention.html>



**Everyone Goes Home Safe Each Day - No Exceptions!**



## Forming and Pouring the Milking Parlor

Declo, Idaho - McAlvain is currently placing over 16,000 CY of concrete in the construction of Millenkamp Dairy's new 260,000 sf Milking Parlor II. This is where 300K cows will be milked using robotic automation every 8 minutes, 24/7 producing 200,000 gallons of milk daily. The interior and exterior wall systems are unique to the project. An OCTA-FORM wall system used in the construction of the 4 interior perfect circle rotaries (above) and an Extrutech wall panel system is used for the interior and exterior walls. These wall systems are then filled with a specially designed concrete mix. It was the first time our crews have worked with these specific forms. Since the beginning of this unique and challenging project, crews have worked diligently day and day out to ensure success. Nice work Team McAlvain!